



COMPACT DIAGNOSTIC SCAN TOOL

FEATURING EZDS' UNPARALLELED DIAGNOSTIC SOFTWARE IN A WORLD-CLASS INDUSTRIAL TABLET



Hardware Specifications

CPU	Octa Core Processor 2.0 GHz
Operating System	Android 9
System Memory	3G / Internal 32G
External Memory	Micro SD Card
LCD	8.0 inch FHD (1920 x 1200)
Input Devices	Capacitive Touch Screen, 3 Hard Keys (Power, Volume +, Volume -)
Camera	8 megapixel auto-focus with LED flash
Sound	Loud Speaker 1 microphone; 3.5 pi standard audio jack
Rechargeble Battery	Li-ion 3.8V 3200 mAh
Operating Voltage	DC 9 ~ 30V
Sensors	Ambient Light, Proximity, Gyroscope, Accelerometer
Dimension	225 x 136 x 33 mm
External Port	USB 2.0 1ea, USB 3.0 2 ea
Network	RJ45 Ethernet, Wifi 802.11 a/b/g/n, Bluetooth 4.2

AC/DC Adapter

Input Power	100 ~ 240V AC
Frequency	50/60 Hz
Input Current	1.5 A
Output Voltage	12V DC
Output Current	3.2 A

Supported Communication Protocols

CAN (High speed, Low speed, Single)
ISO-9141, ISO-9141-CARB, KWP-2000
SAE-J1708, SAE-J1587
J1850 (PWM / VPW)
Melco Pull-Down



Octa-Core 2.0 GHz
A powerful octa-core processor for optimum diagnostic performance and fast management of workshop operations.

Android
Based on Android 9 OS provides quick boot-up, multi-tasking, fast networking and enhanced system security.

8" Eyelluminate LCD
Eyelluminate™ Display LCD provides crystal clear view in both indoors and out, offering field-optimized display under bright workshop environment.

Touch
Eyelluminate™ Display technology enhances touch functionality and allows technicians to perform tasks with work gloves on under any harsh shop conditions.

Service
Diagnostic software programmed by engineers with technicians in mind. Regular and urgent on-demand software update brings diagnostic confidence to users.

J2534
Zenith Z5 functions as a 'Pass-Thru' device for programming the ECUs for multiple carlines.

24V
Zenith Z5 accepts power & signals of 24V system, and supports Bi-directional communications with commercial trucks and buses.

WiFi
Robust connectivity allows for smart updates, quick feedback, Teamviewer Support, Bluetooth printing, browsing and much more.

Pre/Post Diagnostic Report
An intuitively designed diagnostic report function for fast and easy creation of the report on pre and post scan results.

Compact
Compact, yet rugged. Ergonomic size to hold in one hand for long periods of time. Zenith Z5 is a light weight scan tool (680g or 1.5 lbs) with sleek design and ruggedness.

ZENITH Z5

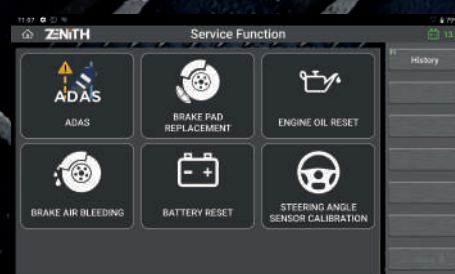
Automotive Diagnostic Scan Tool

www.zenithdiag.com

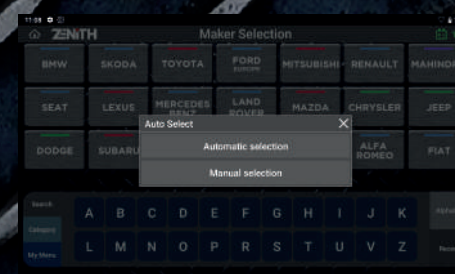
Diagnostics Features



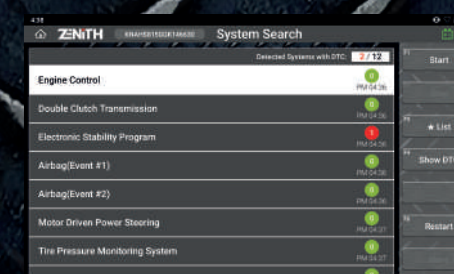
Simple, Yet Intuitive Layout
Zenith Z5 offers simple iconic main menu for easier and quick access to desired functions. With 3 available display mode, user can customize the theme and button locations.



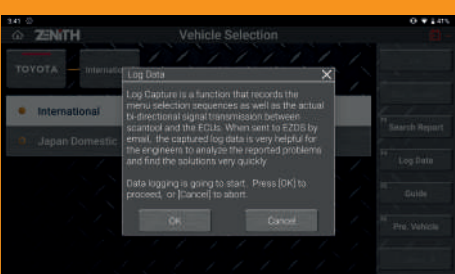
Service Function
Time is money. Z5 offers shortcuts to the most frequently used functions in the workshops to save time for technicians to navigate through the original menu system.



Make Auto Selection
Zenith Z5 acts as a J2534 Pass-thru device for multiple carlines with CAN-Bus, KWP2000, and ISO9141 protocols, supporting J2534 programming and diagnostics. (Exceptions may apply)



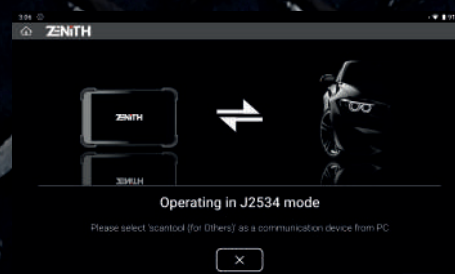
Quick System Search
'System Search' option automatically scans all the vehicle systems, reports fault codes, and provides access to advanced diagnostic functions in each detected systems.



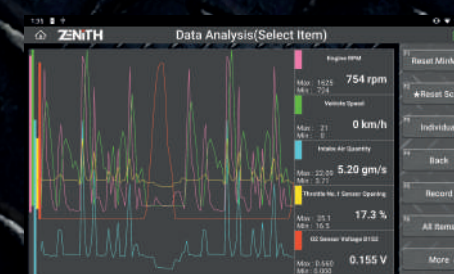
Data Log & Feedback System
In case of communication or function error, user can log the bi-directional data transmission between the tool and vehicle control systems. This log can be sent to the engineers through the log transfer function. The given data log files will be analyzed, feedback will be provided, and a patch file update is provided within 24hours during workdays when necessary.



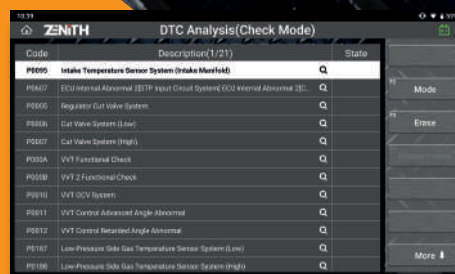
Pre & Post Diagnostic Report
Z5 offers easy creation of diagnostic report with Pre-scan and Post-scan result. Not only you can save the reports as PDF file in the internal memory, also with the help of its robust network connectivity, you can print the report directly with a bluetooth printer or send them to desired E-mail address.



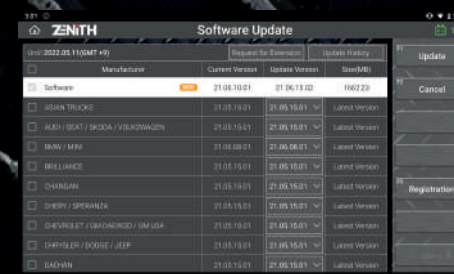
J2534 Pass-thru
Zenith Z5 acts as a J2534 Pass-thru device for multiple carlines with CAN-Bus, KWP2000, and ISO9141 protocols, supporting J2534 programming and diagnostics. (Exceptions may apply)



Fast & Responsive Graphing Mode
Z5 offers fast yet intuitive graphing mode which instantly self-adjusts maximum and minimum scale; enabling the users to more accurately observe and compare live data.



Full Text Description
No more acronyms and cutting of significant texts. Z5 offers the long-text DTC descriptions in full screen, so you get all the information you need.



Smart Update
Z5 offers quick and easy software update with its strong network connectivity. Previous or the latest software versions for each carline can be downloaded directly from the server, per user preference.

www.zenithdiag.com



ZENITH Z5

Automotive Diagnostic Scan Tool