

DIAGNOSTICS

● jaltest MHE

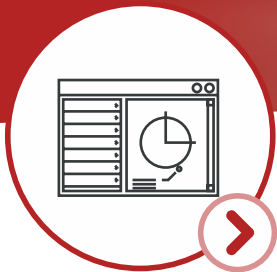
CATALOGUE



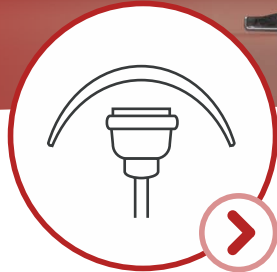
● jaltest MHE



JALTEST MHE



SOFTWARE



COVERAGE



HARDWARE



SERVICES



COJALI

JALTEST. INDUSTRY-LEADING DIAGNOSTICS & TECHNICAL SOLUTIONS





JALTEST MHE

Jaltest MHE is a Multi-brand and Multi-system diagnostic tool developed to perform the most advanced diagnostic and maintenance tasks on material handling equipment and lifting platforms, in an easy and intuitive way.

Jaltest is not limited to reading error codes on vehicle systems, it also features bi-directional controls and guided troubleshooting.

Jaltest after-sales support is focused to deliver professional services to the workshop through:

1. Technical Assistance.
2. Training & e-Learning.
3. Specialised Customer Support.

LINK V9

GRAPHICAL
USER
INTERFACE

MULTI-BRAND
AND
MULTI-SYSTEM
COVERAGE

MORE THAN
DIAGNOSTICS





LINK V9



LIGHTER,
FASTER,
BETTER

FASTER CONNECTION RATE (BAUD RATE).

Improved performance and communication with a speed increase in the data transfer and processing, both in VCI-PC and VCI-system.

USB AND SUB26 CONNECTOR PROTECTION (POKA YOKE MODEL).

Protection and integrity of the connectors that have a mistake-proofing design.

ROBUST ELECTRONICS AND ENHANCED COMMUNICATION CAPABILITIES.

Greater connectivity, new supported communication protocols and extended multiplexor.

IMPACT ABSORPTION.

Design with a rugged covering that cushions small bumps, protects against scratches and enables the seal closure of the device, preventing the inlet of dirt and water (IP40).

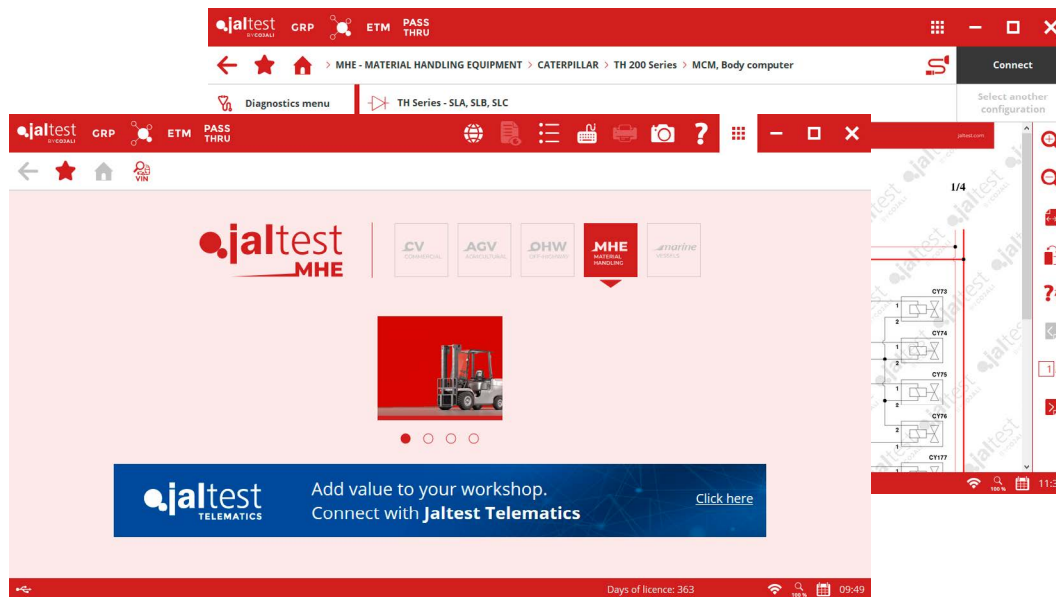
COMPACT AND LIGHT.

Reduced weight, Jaltest V9 is 76% lighter than its predecessor. It offers the possibility of attaching a lanyard to facilitate the use of the device.





GRAPHICAL USER INTERFACE



MORE VISUAL,
MORE INTUITIVE

FAST INSTALLATION AND HANDLING.

Optimized software to reduce the installation and update time, as well as a shorter response time.

CUSTOMISABLE.

Responsive design that adapts to all screen types and sizes. It enables the user to configure the shortcuts, customise the working area and define the visualisation according to the user needs.

EVERYTHING IN ONE SINGLE DISPLAY.

It offers the user all the information they needed one single display. It enables them to visualize the maximum number of functions, make a search, etc.

ELEGANT DESIGN WITH BRIGHTER COLOURS.

Clean, minimalist and elegant design to favour the visualisation of graphics, icons and colours.





MULTI-BRAND AND MULTI-SYSTEM COVERAGE

Jaltest MHE is the benchmark in the lifting and material handling machinery sector due to its great advantages and possibilities to carry out effective diagnosis.

Following the functionalities of the rest of Jaltest modules, this version is completed with a great coverage of brands, systems and technical information, as well as a wide range of cables to make a direct connection.

COVERAGE // UP TO 43 BRANDS		
BOBCAT	CATERPILLAR	GENIE
HAULOTTE	JCB	JLG
JUNGHEINRICH	LINDE	MANITOU
SKYJACK	STIHL	TOYOTA



Jaltest unparalleled MHE diagnostics coverage sets up an industry leadership with the most extensive and detailed coverage. New functionalities, brands and modules are included in updates scheduled every 4 months using flexible and market-oriented focus.



MORE THAN DIAGNOSTICS

This are some of the features that make Jaltest the Industry's Leading Diagnostics tool:

1. GRP (Garage Resource Planning). Workshop and Customer/Vehicle Record Management.
2. i-PARTS ASSIST. Cross-referencing platform. Installation guides.
3. Diagnostics Menu.
4. System Technical Data.
5. Wiring diagrams, and fuses and relay boxes.
6. Vehicle Service Data.
7. Vehicle Technical Information.
8. Troubleshooting Guides by symptoms.
9. Technical Releases.
10. Troubleshooting Guides by Fault Codes.

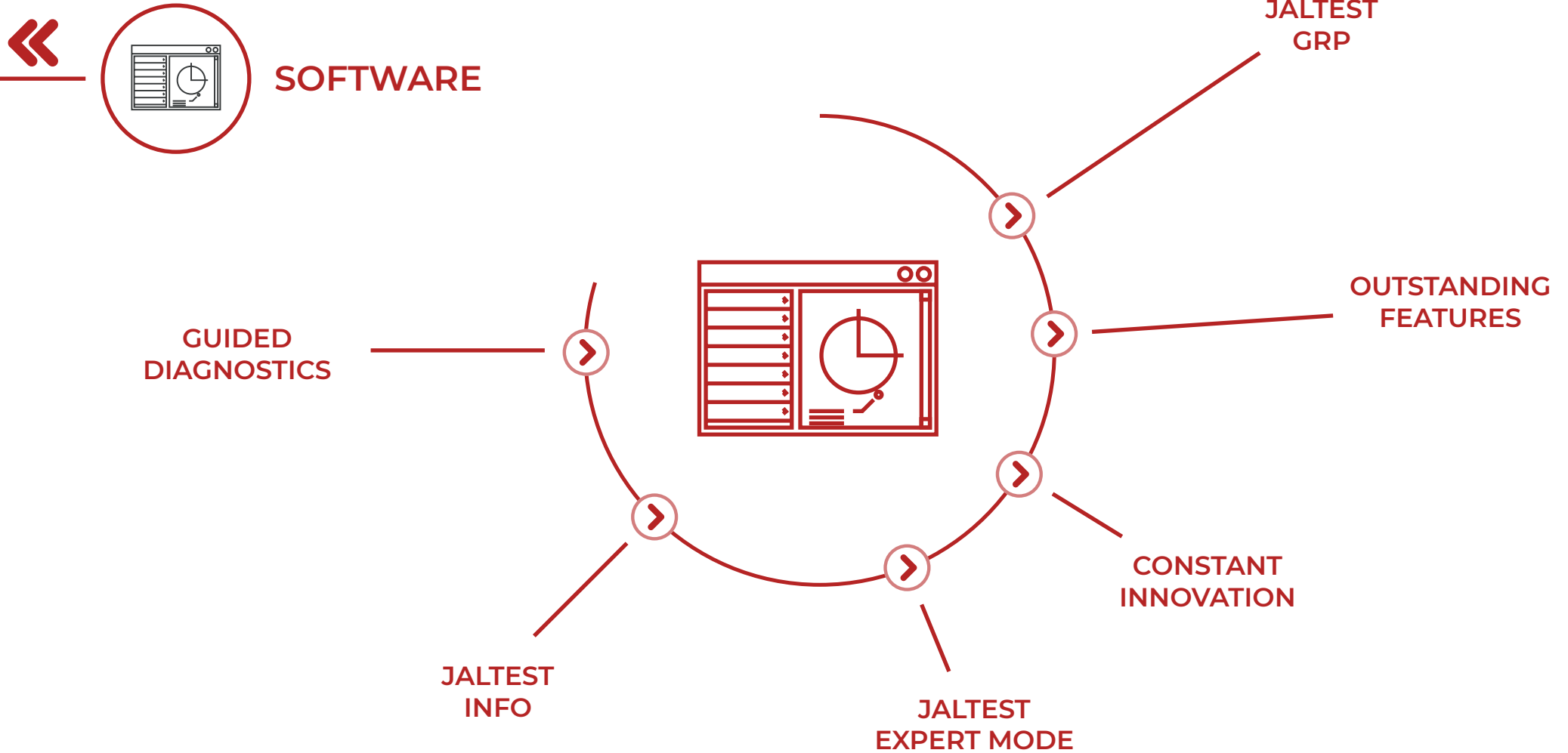
With Jaltest, technicians will have access to a wide range of functionalities which will guide them through the machine repair process:

The screenshot shows the Jaltest diagnostic interface for a Caterpillar TH 200 Series engine. The breadcrumb navigation path is: MHE - MATERIAL HANDLING EQUIPMENT > CATERPILLAR > TH 200 Series > C-4.4 / C-6.6, J1939, Engine Control Module. The interface displays a 'DIAGNOSIS' screen with a table of error codes stored in memory.

Error Code	Description	Severity	Status	Action
3360	x1 Aftertreatment Diesel Exhaust Fluid Controller.	i	%	✓
651	x1 Injector Cylinder 1.	i	%	✗
PID:1797	x1 Injection rail pressure sensor.	i	%	?

At the bottom of the error list, there are three categories: PRESENT ERROR (red X), NON-PRESENT ERROR (grey X), and OTHER ERROR STATES (yellow X).







GUIDED DIAGNOSTICS

Jaltest MHE provides the necessary information to repair breakdowns of forklifts, telehandlers and lifting platforms in an easy and effective way.

1. Component technical data.
2. Wiring, system and fuse diagrams.
3. Machine service data for equipment inspections.
4. Equipment technical data.
5. Troubleshooting by symptoms of the most common failures on the machinery.
6. Releases and procedures with manufacturer information.

**JALTEST GUIDES YOU
WITH ADDITIONAL
INFORMATION TO
ASSIST IN THE REPAIR
PROCESS**



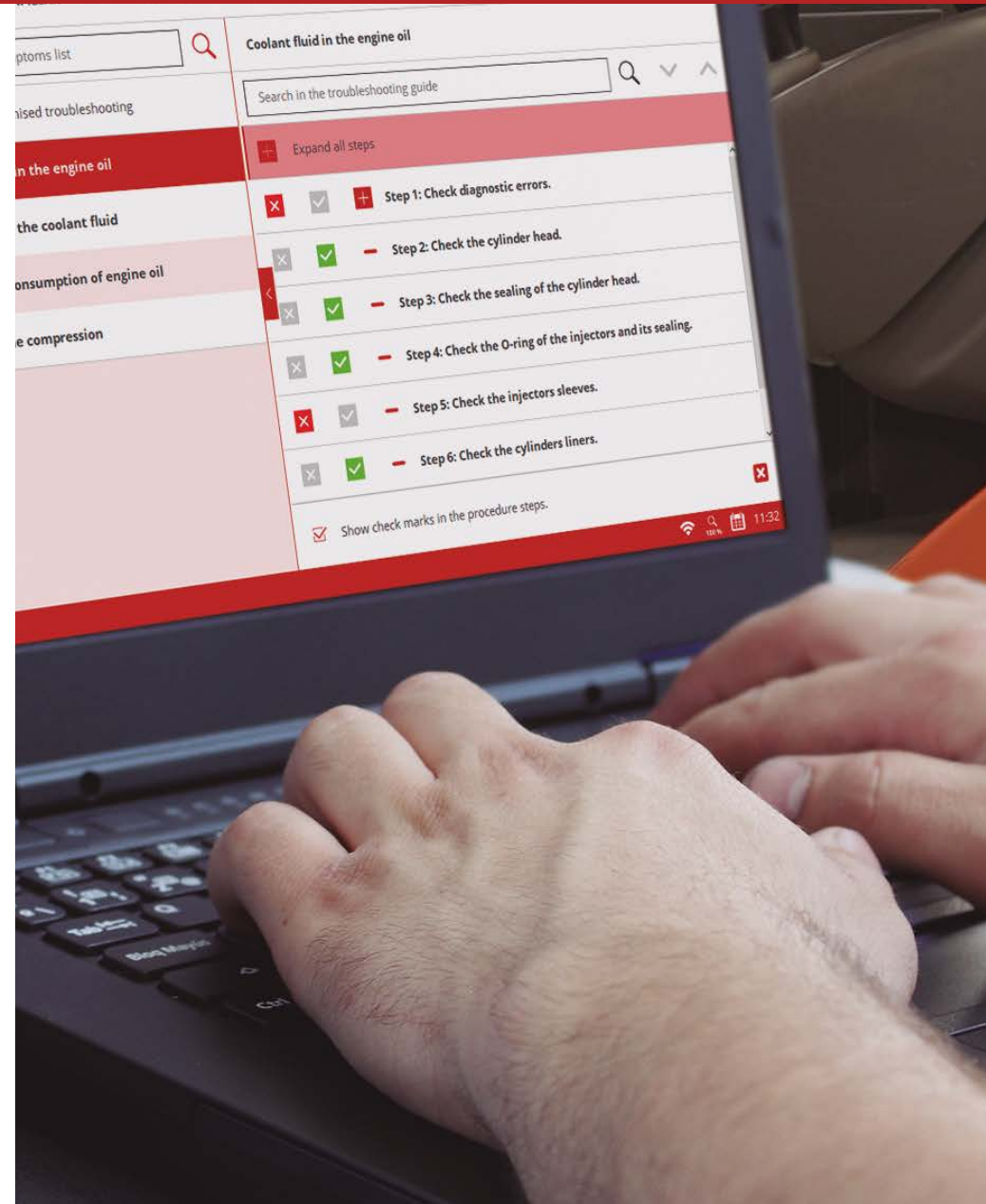


JALTEST INFO

Detailed technical information including images, pictograms, graphics, diagrams and pictures for every vehicle to be diagnosed. This information will help to identify the error code, the part, the location, etc. In this complete module we can find:

1. Diagnostics (troubleshooting by error code).
2. System Technical Data.
3. Diagrams.
4. Vehicle Technical Data.
5. Vehicle Service Data.
6. Troubleshooting by symptoms (diagnostics).
7. Releases and Procedures.
8. Manual Diagnosis.

**JALTEST INFO IS THE
BENCHMARK TECHNICAL
INFORMATION IN THE MARKET**



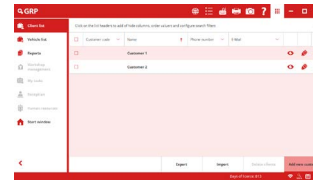


JALTEST GRP

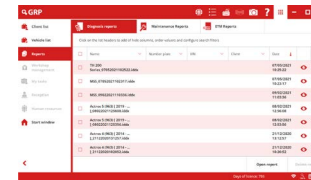
GRP is an optimised workshop management solution. It shares customer information, machine data and diagnostic reports, work order management and labour times.

GRP BASIC.

- Client list.
- Vehicle list.
- Reports (diagnosis & maintenance).



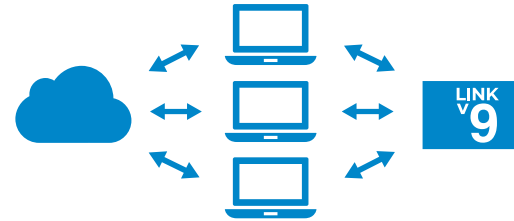
CLIENT LIST.



REPORTS.

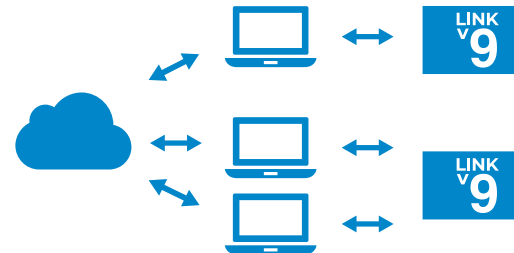
GRP SYNCHRO.

- GRP Basic.
- User accounts control (10 maximum).
- Data synchronisation between multiple PCs (same Jaltest interface).
- Information Back-up.
- Human Resources.



GRP ENTERPRISE.

- GRP Synchro.
- Workshop Management Module.
- Reception Module.
- My Tasks Module.
- Data synchronisation between PCs (same company).
- Work order reports.
- User accounts control (unlimited).



GRP NETWORK.

- Access to diagnosis and maintenance reports between multiple workshops inside a network.



GRP MODULES DESCRIPTION:

CLIENT LIST.

Management of customers for a workshop or a network of workshops.

VEHICLE LIST.

Management of vehicles for a workshop or a network of workshops.

REPORTS.

Management and consultation of all reports generated by Jaltest: diagnosis, maintenance, work order, workshop time.

WORKSHOP MANAGEMENT.

- Work orders.
- Task.
- Workshop time reports.

MY TASK.

Each user can manage the assigned tasks easily by this menu.

RECEPTION.

- Reception forms.
- Work orders management.

HUMAN RESOURCES.

Intended for the management of the workshop's staff.



OUTSTANDING FEATURES

1. INTERACTIVE WIRING DIAGRAMS.

While navigating over the wiring diagrams, the components are outlined and the technical information including, relevant documents, technical data, comments and location, can be directly accessed.

2. SYSTEM OPERATING DIAGRAM.

Understanding how systems work can be a complex task. Jaltest provides the pneumatic, electrical and fuel schematics with their corresponding technical values, images, locations and much more to speed up the technician's work.

3. SYSTEM DISPLAY.

Real-time live data display on vehicle schematics. It enables a fast assessment of the functioning of the system.

4. VIRTUAL INSTRUMENTS / GRAPHS.

Visual aid for the technician to check values and understand the actual status of any system available in the machine.



5. SYSTEM SCAN.

This function allows the user to auto-detect the available systems in the selected model. During the Auto-detection, error reading of every available system takes place including their identification data. Later, every error found can be cleaned.

6. FLEET CUSTOMISATION.

This function will allow customizing your fleet. Create new brands specific to your market by selecting the systems included in the machine. Add connectors, location, images and comments.

7. DIAGNOSIS BY NUMBER PLATE.

Once the customers and vehicles portfolio has been created, the access by number plate is fast and easy.

8. SHORTCUT TO SPECIAL FUNCTIONS.

Optimise repair times at the shop with direct access to relevant repair processes.

9. TECHNICAL DATA AND PROCEDURES.

The experience of Cojali's Technical Assistance team has allowed the classification of the most relevant technical data of the machine.





JALTEST EXPERT MODE

Jaltest EXPERT MODE offers advanced diagnostic possibilities for the workshop. With EXPERT MODE, the technician is able to carry out actions that require modifying parameters on different ECUs:

1. Mast tilt angle sensor calibration.
2. Joystick calibrations.
3. Particulate filter regeneration.
4. Load cell sensor calibration.
5. Transmission calibrations.
6. Maintenance reset.
7. More...





CONSTANT INNOVATION

New machinery, models and systems are being developed constantly. This is why Jaltest MHE releases three software updates each year, offering your business industry-leading diagnostics solutions.

BRANDS

43

MODELS

695

SYSTEMS

2728

TECHNICAL INFO

1372

DIAGRAMS

919

THREE ANNUAL SOFTWARE UPDATES





COVERAGE

MATERIAL HANDLING EQUIPMENT

This Jaltest kit has been developed to perform diagnostics on material handling equipment and lifting platforms as well as forklifts, electric pallet trucks, scissor lifts or telehandlers.

With extensive coverage, detailed technical information and step-by-step repair guides, Jaltest MHE is one stop solution for each and every workshop.

JALTEST KITS



THIS COMPREHENSIVE COVERAGE MAKES THIS KIT THE MOST POWERFUL DIAGNOSTICS UNIT ON THE MARKET

1. COVERAGE FOR INTERNAL COMBUSTION FORKLIFT, SCISSOR LIFT, TELEHANDLER AND MORE.
2. ALL COMMUNICATION PROTOCOLS ARE SUPPORTED.
3. INTUITIVE AND QUICK SOFTWARE INTERFACE.
4. AUTOMATIC DETECTION OF SYSTEMS AND ERROR CODES.
5. TROUBLESHOOTING BY SYMPTOMS AND ERRORS HELP.
6. INTEGRATED TECHNICAL INFORMATION, WIRING DIAGRAMS, TECHNICAL DOCUMENTS...
7. SCHEDULED UPDATES AND LATEST DEVELOPMENT IMPLEMENTATIONS.
8. CALL-CENTER FOR TECHNICAL AND PRODUCT SUPPORT.
9. TRAINING & E-LEARNING.
10. i-PARTS ASSIST. CROSS-REFERENCING PLATFORM. INSTALLATION GUIDES.
11. GRP - GARAGE RESOURCE PLANNING.
12. MACHINE BRAND CUSTOMISATION.

JALTEST KITS ARE CLASSIFIED BY SECTOR AND COVERAGE





JALTEST KITS

Much more than just a multi-brand diagnostic tool. Jaltest Diagnostics includes many functionalities that will help you during the vehicle maintenance and repair process, facilitating and speeding up your work at the workshop.

Our combined kits of hardware and software make it possible to cover with a single device any brand or model of commercial vehicle, agricultural equipment, special equipment, material handling equipment or vessels.

Find out the features that make Jaltest Diagnostics the most valued tool in the sector.





HARDWARE

All Jaltest products have been designed to meet the demands and needs of the workshop mechanics and the most demanding road assistance needs. They are designed and built to face any extreme work or weather conditions.

JALTEST RUGGED PC.

- Windows 10 Pro.
- Exclusive design that improves resistance.
- IPX3, IP5x category certification.
- Liquidresistant keyboard/touchpad.



JALTEST RUGGED PAD.

- 10" Rugged Tablet with Windows 10 Pro.
- Daylight-readable Display with Gloved Multi Touch + waterproof digitizer pen.
- User-replaceable Battery and Optional Long-Life Battery.



Accessories included.
Hand Strap.
Corner Guards.

JALTEST HARDWARE SOLUTIONS.

The tool's heartbeat, programmed to convey information with all communication protocols in a quick and efficient way.

LINK V9



CABLES



JALTEST ACCESSORIES.

Additional equipment offered to the workshop in order to perform their daily tasks in an easier and more comfortable way.

WORKSTATION



HARDCASE



Dimensions:
680 x 480 x 180 mm (26.77" x 18.90" x 7.09").





SERVICES

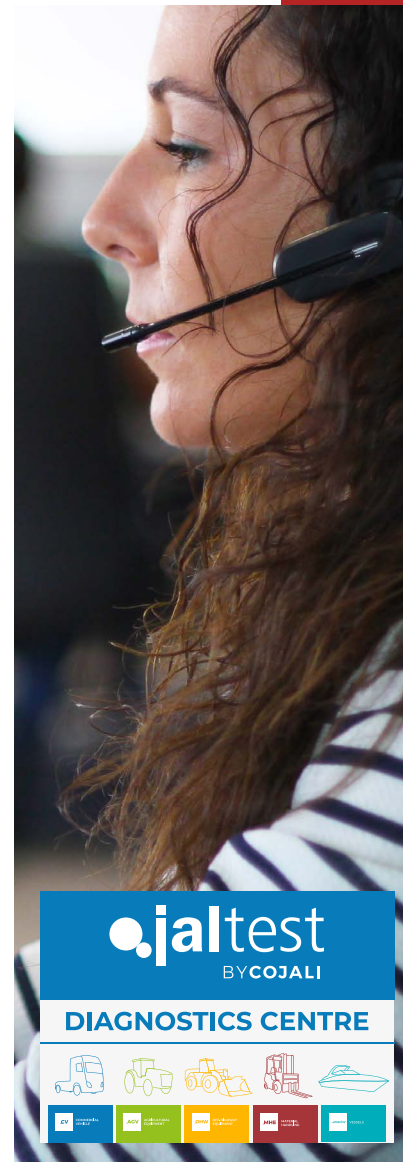
JALTEST UNIVERSITY

Jaltest University gathers all the training offer of Jaltest, from courses traditionally taught on-site to e-learning courses or webinars. Thus, we have adapted to the new needs for universal and quality training at the disposal of any professional in the sector.

1. E-Learning courses.
2. Webinars.
3. On-site courses.
4. Courses for distributors.

COURSES

- | | |
|--|---|
|  DIAGNOSIS |  GEARBOX |
|  ELECTRICITY |  TRAILER |
|  PNEUMATICS |  AGRICULTURAL VEHICLE |
|  ENGINE MANAGEMENT |  JALTEST SPECIALIST |
|  OTHERS | |



TECHNICAL ASSISTANCE

This kind of support is essential to solve certain vehicle breakdowns. Technological developments require the technician to update their knowledge regularly. Cojali offers a specialised support based on the experience of our top mechanics and the development of technical information for material handling equipment.

Jaltest customers worldwide continue to trust with our specialised technical assistance service; this service includes the possibility of remote assistance connections to solve our customers' doubts, immediately.

THE CHANCE TO TURN
YOUR WORKSHOP INTO
A TECHNOLOGICAL CENTRE
IS IN YOUR HANDS

CUSTOMER SERVICE

A human team will be at your service to offer all the information about Jaltest you may need.

1. Software Update and Innovations.
2. Update release calendar information.
3. Device license management.
4. New products, hardware and software.
5. Special offers and promotions.
6. Invoices and purchase orders.
7. Shipping management.



« **cojali**

- cojali** >
- jaltest TOOLS** >
- i-PARTS ASSIST** >
- jaltest ISOBUS CONTROL** >
- jaltest TELEMATICS** >
- OEM. SOLUTIONS by cojali** >

COJALI.
WE MEET ALL YOUR BUSINESS NEEDS >



Cojali is a Spanish multinational company and a leading manufacturer of cooling systems, braking systems, electronic components, multi-brand diagnostics and telematics for commercial vehicles, agricultural equipment, construction machinery, material handling equipment and vessels.

Established in 1991, Cojali focuses on research, development and innovation for commercial vehicles in the aftermarket, offering high quality products just as the OEM.

« jaltest cojali



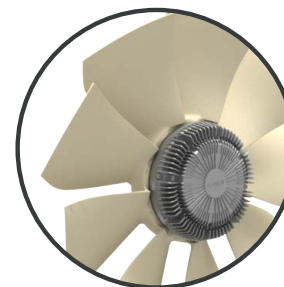
SUSPENSION AND BRAKE SYSTEMS

In Cojali we give priority to driving safety and resource optimisation. We develop and manufacture the best brake and suspension systems compatible with the main brands of truck, bus and trailer.



ELECTRONIC AND ELECTRIC COMPONENTS

They are in charge of highly important functions such as the measurement of the exhaust gases, the climate control of the cab or the reduction of fuel consumption. Therefore, they have become essential in order to meet the current needs of the sector.



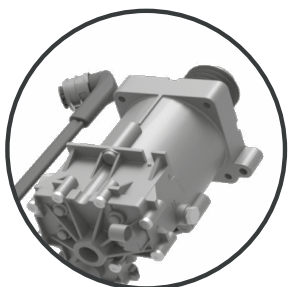
COOLING SYSTEMS

Our cooling systems, adaptable to the main brands of truck, bus, light vehicle, passenger car, agricultural equipment and construction machinery, are manufactured under the most demanding quality standards.



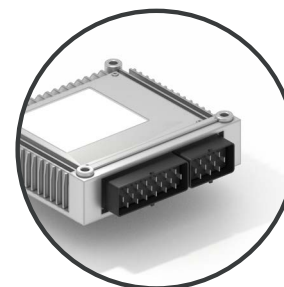
REPAIR KITS

Repairing a component in the workshop can save time. Therefore, in Cojali we have drawn on all our expertise as manufacturers for the development of the repair kit range in order to make these kits available for our customers.



TRANSMISSION AND POWER SYSTEMS

We offer a wide catalogue of components for the transmission systems of the main brands of truck and bus. Our clutch servos use the most modern techniques in hydraulic or pneumatic transmission.



REMAN

We invest our efforts in repairing and prolonging the useful life of electronic control components. Our catalogue of reconditioned products includes brake callipers, valves, brake and suspension systems and ECUs.



New range of Jaltest Tools products designed to supply the workshop with a high-quality professional equipment and consistent with the current digital technology of the commercial vehicle.

Combined with Jaltest, the leading multi-brand diagnostics tool, it will provide new business opportunities and a simple and guarantee service for the final client.

This union will facilitate the most advanced diagnostics tasks and maintenance of the vehicle, in a simple and intuitive way, not only at the software level, but also at manual and check tasks level.



JALTEST ADAS CALIBRATION EQUIPMENT
Jaltest Tools launches onto the market, in a pioneer manner, the necessary equipment and accessories for the correct calibration of ADAS systems present in commercial vehicles, always accompanied by detailed information for their installation and operation.



JALTEST PTE
Jaltest PTE is a mobile device designed to check the power supply and the signals that are transferred between the tractor head and the towed vehicle, such as lighting, indicator lamps, and CAN communication.



JALTEST SST
Jaltest SST is a device designed to check the status of both passive and active speed sensors. In addition, it includes an option to simulate signals in order to verify the behaviour of the control unit.



ELECTRONIC AND AUXILIARY EQUIPMENT
Jaltest Tools, based on its great Jaltest experience in workshop diagnostic equipment, has developed a wide variety of instruments to be used in a complementary and frequently manner in order to perform diagnosis and any subsequent action on the vehicle correctly.



SPECIAL TOOL
Specific equipment necessary for maintenance and repair operations in essential components of the vehicle, such as gearbox or engine.



PRECISION AND AUXILIARY TOOL
Mechanical tools for tasks requiring precision, such as torque wrenches, etc.



i-Parts ASSIST

i-Parts ASSIST, is Cojali's latest Parts Support Program aimed towards the workshop.

Through a series of guides and video tutorials, the workshop is capable of easily carrying out the installation of components that may require reprogramming or the use of diagnostics tools.





jaltest

ISOBUS CONTROL

JALTEST ISOBUS CONTROL offers electronic control solutions for implements, guaranteeing connectivity between the machine and the tractor regardless of the manufacturer. The purpose is to achieve the maximum performance of agricultural equipment in order to manage successfully and easily a productive and efficient business, adapted to new technologies and environmental demands.

Based on ISOBUS technology (ISO 11783), the main objectives of this solution are:

1. To ensure complete compatibility between tractor and implement regardless of the manufacturer.
2. Implement control from a single work screen.
3. Optimisation of time, resources and machines.
4. Automation of agricultural processes.
5. Maximisation of agricultural production and cost reduction.
6. Acquisition of efficient data to aid in the decision-making process and in future season planning.

ISOBUS is a standard communication protocol created by the main manufacturers of agricultural equipment that ensures compatibility between tractors and implements of different manufacturers, allowing the data exchange by means of a universal language and a single screen in the tractor cab.





JALTEST TELEMATICS

Jaltest Telematics defines a new concept in the market that improves any current solution by adding technical information obtained directly from the vehicles.

Jaltest Telematics is aimed towards the optimisation of fleet efficiency, by reducing the number of breakdowns, measuring the main indicators to support the decision-making process, and providing the necessary information to the users in each role.

1. Cloud Diagnostics.
2. Real time fleet health-check.
3. Breakdown time reduction.
4. ROI optimisation.
5. Proactive Workshop.



TELEMATICS, CLOUD DIAGNOSTICS AND MACHINERY
MANAGEMENT. A SOLUTION FOR EVERYTHING





 **LOCATION:**

Locate a machine or follow the transfer of the equipment for a period of time. Alarms of security limits, check the equipment working area.

 **CLOUD DIAGNOSTICS:**

Check the machine error codes every time you use it. Stop the machine before the breakdown.

 **FLEET HEALTH CHECK:**

Monitors all your machines on a single screen.

 **TIMES:**

Idle times or working time. Compare uses between different equipment.

 **EFFICIENCY:**

Group machines and monitor the working coupling factor. Identify equipment below capacity.

 **MAINTENANCE:**

Create and manage workshop tasks. Reception and work order management.

 **FUEL:**

Control the daily fuel use from your fleet or workgroups. Send fuel trucks at the right time.



OEM.
SOLUTIONS
by cojali

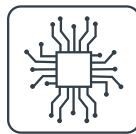
OEM SOLUTIONS BY COJALI

Cojali is not only a manufacturer for the independent after-market, but also an OEM-level solution provider.

Thanks to a vast experience in the manufacturing of high-quality products, industry-leading and independent multibrand diagnostics and new technologies for fleet management, Cojali is a sure bet to provide solutions for leading vehicle and system manufacturers.



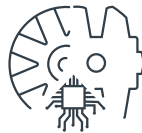
DIAGNOSTICS



ELECTRONICS

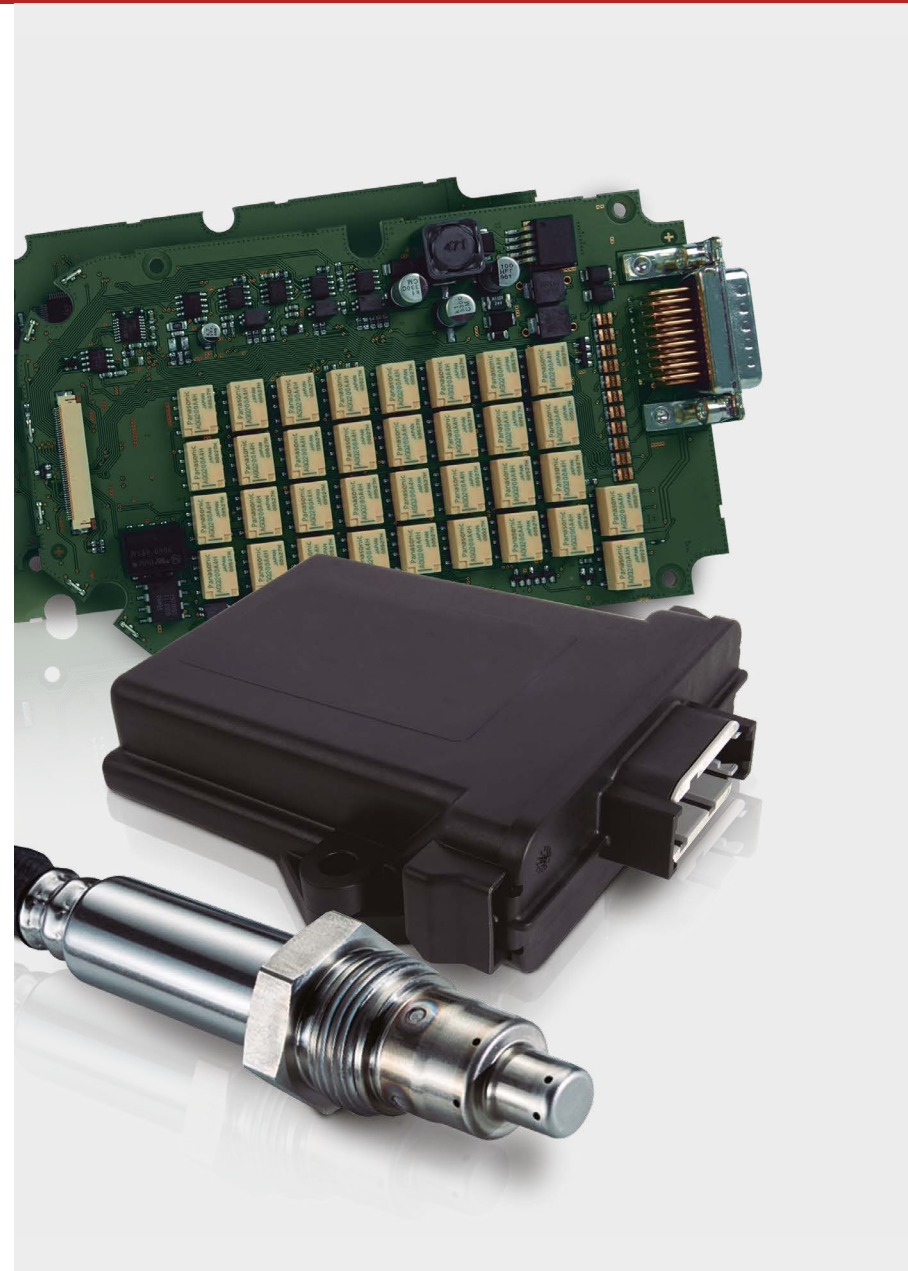


TELEMATICS

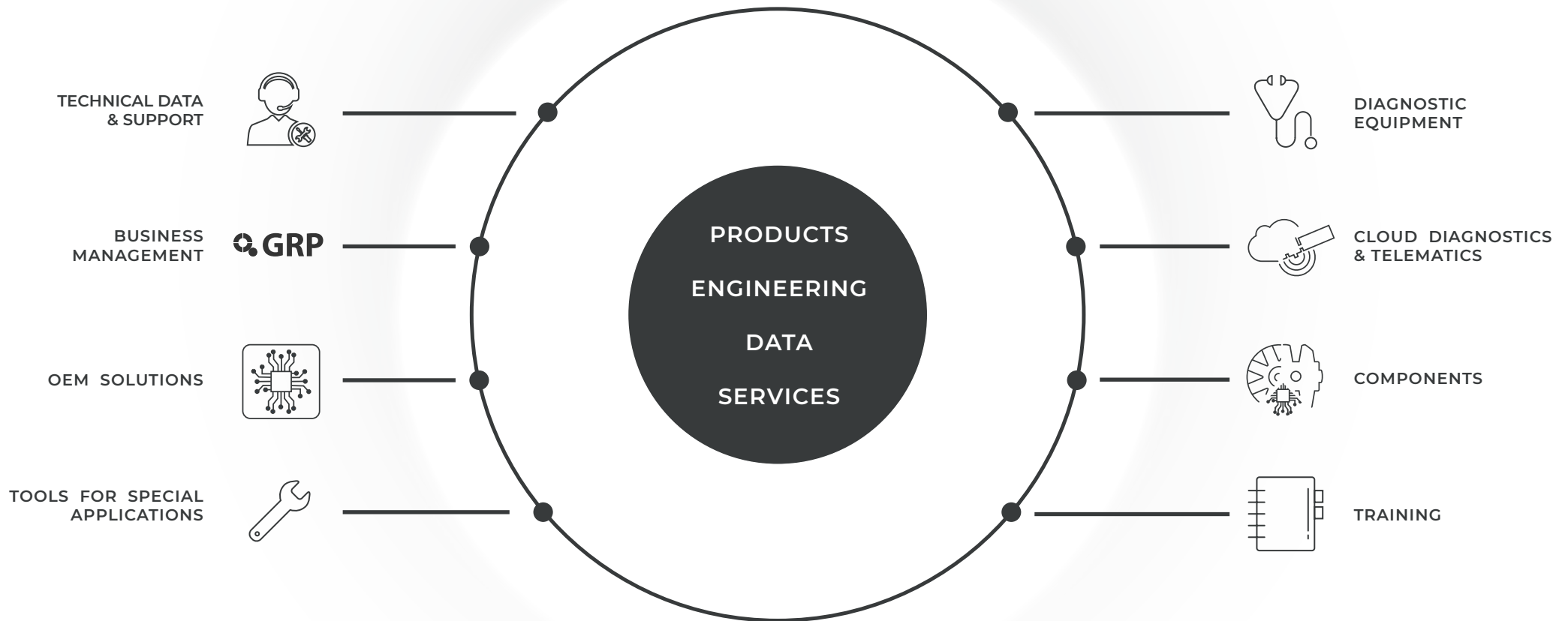


COMPONENTS

**TAILORED HARDWARE & SOFTWARE
SOLUTIONS FOR MANUFACTURERS**



COJALI. WE MEET ALL YOUR BUSINESS NEEDS





cojali.com

jaltest.com

jaltest-telematics.com



2021 V1 EN

HEAD OFFICE

National

Tel.: +34 926 589 038



atencionalcliente@cojali.com



International

Tel.: +34 926 270 621



customerservice@jaltest.com



CLICK HERE TO CONTACT US