

Global Standard in Diagnostic Technology

G-scan 2



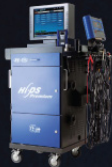
EZDS
E-ZENITH DIAGNOSTIC SYSTEM

A Passion for Perfection

Dedicated to the automotive diagnostic industry for 2 decades.
Committed to provide the best solutions to OEM and aftermarket customers.

2001

- Launched "Hi-DS Workstation"
- Hi-DS Workstation and Scanner GD mark awarded and selected as official equipment for the 36th Seoul Skill Olympics.



2003

- Developed Service Information System for Hyundai and Kia.
- Technical Hot Line System Developed for Kia Motors.

2004

- Supplied Hi-DS Workstation to GM Daewoo
- Developed GSW (Global Service Way) dealership service information system for Hyundai.

- Established GIT America in California, USA.
- Appointed as Tier 1 supplier for Kia Motors America.
- Contract signed with Kia Motors for supply of GDS OEM factory tool.



2005

- Launched Commercial GDS for Hyundai worldwide dealerships.
- Installed "U-robot", automatic electronic parts check system to worldwide Hyundai and Kia factories.
- Participated in Automechanika Frankfurt exhibition.



2010

- Established GIT Beijing Automotive Technology Co., Ltd., in Beijing, China.
- Developed diagnostic solution based on smart phones and pads.

2011

2012

- Installed ECOS automated electronic module inspection system to all Hyundai Mobis factories around the world.
- Established GIT Europe GmbH (Frankfurt, Germany).
- Participated in Automechanika exhibitions in Frankfurt and Shanghai.

2013

- Launched "G-scan 2" to worldwide aftermarket.
- Participated in Automechanika Dubai and Las Vegas AAPEX exhibition.



A Passion for Perfection

Competitive Edges

- Industry leader with more than 75% of the Korean domestic market.
- Rich experience and know-how with more than 18 years of automotive diagnostic system development.
- Higher quality standard that meets the Hyundai and Kia OEM requirement.
- Combination of advanced Korean and Japanese technology for aftermarket diagnostic products.
- Tech oriented company with more than 60% of the employees being assigned to R&D.
- Interactive relationship with the customers with on/offline tech support, remote analysis, quick feedback systems and local training.

Honors and Credits

- Original equipment supplier for both Hyundai and Kia Motors.
- Good Design Award for "Hi-DS Scanner".
- Promising Medium-Small Enterprise
- Prime Minister Prize, 2009 Venture Company Grand Prix.
- \$3M and \$10M export plaque.

Growing Momentum

- 10 year CAGR (Compound Annual Growth Rate): 20% since 2005.
- Market share in Korea: 75%
- Products currently being supplied to 193 countries worldwide.

Global Standard in Diagnostic Technology

• GIT Co., Ltd. Established

1997

- Developed Automobile Trouble Tracing System for Korean government.
- Supplied ECOS system by Hyundai motors.

1998

- Launched "Hi-DS ROADTECH" flight recording equipment.
- Launched "Automasta", the PC based diagnostic workstation.



1999

- Launched handheld scan tool "Hi-DS Scanner"



2000

2006

- Contracted with Hyundai and Kia for supply of GDS as authorized dealership equipment.
- Developed G-scan handheld scan tool.



2007

- Affiliated INS Co., Ltd of Japan.
- Technical collaboration with INS for G-scan aftermarket diagnostic software development.
- \$10M export prize awarded.

2008

- G-scan authorized as the secondary official scan tool for Hyundai and Kia.
- Launched "G-scan" aftermarket version in Japan.



2009

- Launched "Hi-DS Simulator", the powertrain simulation system for training and education.
- Awarded Prime Minister Prize.
- Started supplying G-scan to the worldwide aftermarket

Established EZDS for Global Aftermarket Business.



2014

- Launched "GDS M" as new generation authorized dealership equipment for Hyundai and Kia.



- "VMi2" for G-scan 2 released.
- Participated in Automechanika Dubai, Chicago, Automec Sao Paulo and Las Vegas SEMA.



2015

2016

- Launched "G-scan Tab" 2016



2017

- "G-scan2 has been awarded PTEN Innovation award 2017"



Corporate Name	Global Information Technology Co., Ltd
Established	May 22, 1997
Address	GIT Bldg., 87, Macheon-ro, Songpa-gu, Seoul, Korea 138-855
Business Field	Automobile Diagnostic System Development and Manufacture
Overseas Branches	GIT America Inc. (California, USA), GIT Beijing Automotive Technology Co., Ltd. (Beijing, China), GIT Europe GmbH (Frankfurt, Germany)
Major Products	Hi-DS Premium, Hi-DS Scanner Gold, GDS, GDS M, G-scan, G-scan 2

G-SCAN 2

A Truly Accurate and Reliable Scan Tool You Can Trust



World's Best for Asian Cars

The combination of Japanese and Korean technology provides unchallenged coverage for Asian vehicles. This includes OEM-level hardware and software for diagnostics on Hyundai and Kia vehicles, plus software for many Japanese cars and trucks.

Competitive Coverage for Non-Asian cars

In addition to Asian vehicles, G-scan 2 also provides competitive coverage for European and American car manufacturers as well as local brands in different countries.

Specification

CPU	Triple: ARM 11(600MHz) and 2 x ARM 9 (266MHz)	
Internal Memory	Board #1: NAND Flash 128MB and SD RAM 256MB Board #2: NAND Flash 32MB and SD RAM 8MB Board #3: NAND Flash 32MB and SD RAM 8MB	
External Memory	16GB SD Card	
Operating Temperature	0~50 °C	
Display	7" TFT LCD (1024 x 600)	
CAN-BUS	High/Low/Single CAN Fully Supported On-Board	
Rechargeable Battery	Li-ion Polymer 2100mAh 1 Cell	
Operating Voltage	7~35 DCV Commercial Vehicle 24V System Supported	
Dimension	230 (W) x 146 (H) x 72 (D) mm	
External Port	USB 2.0	
Network	Wi-Fi and Bluetooth On-Board	
Input Device	Touch Screen + 13 Hard Keys	
Protocol	CAN K-Line/L-Line Commercial Maker	ISO-1898, ISO-11519, SAE-J2411 ISO-9141, ISO-9141-CARB, KWP-2000, SAE-J1850 SAE-J1708, RS-232C Melco Pull-Down UART

***Direct Printing** If the G-scan 2 is connected to the same network as the PC you can print screen displays and saved screen captures through the PC Utility program with your PC's network printer.

****Stand-by Mode** A short press of the power key while operating G-scan 2 puts the tool into Stand-by mode. This uses minimum power consumption. Then, a short press of the power key or touch of the screen wakes the tool instantly.



Triple CPU High Performance Structure

Designed for fast boot-up and high performance. Upgraded to 3 CPUs, each performing a single function; computing, communication, or measurement.



Oscilloscope Function

G-scan 2 measures the voltage or amperage signals of the vehicle's sensors and actuator circuits in rapid repetition and displays the signals in graphic waveforms.



Touch Screen

User interface through touch screen technology provides the easiest and the most intuitive use of the diagnostic scan tool and its multiple functions.



7" Sunlight Readable LCD Touch Screen

7" High Resolution Touch Screen offers greater readability and convenient touch-screen operation.



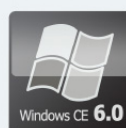
Wireless Connectivity

WiFi connection to the Internet allows for smart updates, quick feedback, real-time PC interface, and direct printing.



16GB Memory

The SD card accommodates software applications and data for all brands with room to spare.



Windows CE 6.0 Operating System

Latest Windows CE 6.0 O/S provides improved smart phone style user interface, better networking and enhanced system security.



Zero Second Boot-Up

For quick boot-up, G-scan 2 supports Stand-by mode. Press the power button, and G-scan2 instantly wakes up, ready for use.



J2534 Pass-Thru Using G-scan 2

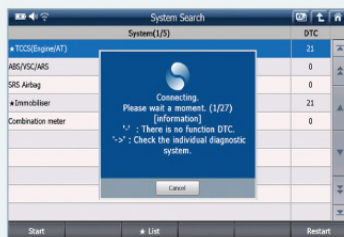
G-scan 2 serves as a 'Pass-Thru' device for programming the ECUs on both Hyundai and Kia vehicles.



24V Commercial Vehicles Support

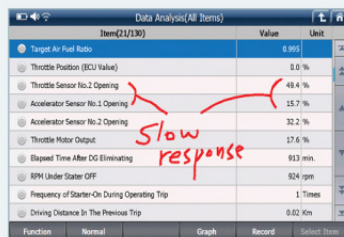
Supports communications with buses and trucks, and accepts power and signals of 24V commercial vehicles.

Diagnostics: Features



System and DTC Auto Search

"System Search" option automatically checks all vehicle systems, reports fault codes, and provides access to advanced diagnostic functions in each detected system.



Screen Capture with a Memo Function

Simply capture the screen any time and add quick hand written notes on the screen. It can be saved and reloaded for future reference.

PC Utility



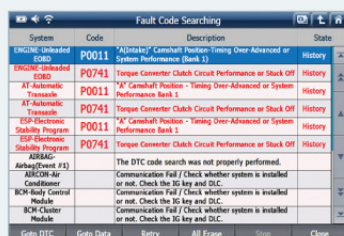
PC Utility Program

Useful functions such as Vehicle Diagnostic Report, Data Viewer and Network Printer Setup are all available with the PC Utility program.



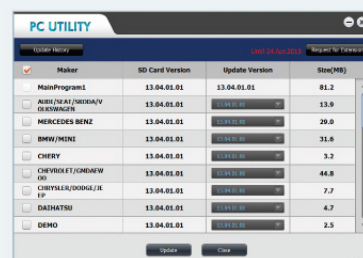
J2534 Pass-Thru

G-scan 2 supports ECU reprogramming on both Hyundai and Kia vehicles in J2534 pass-thru mode. The G-scan 2 also operates as a J2534 pass-thru device for other vehicle manufacturers supporting J2534 programming and diagnostics. This requires OEM-specific diagnostic software. It operates through G-scan 2 pass-thru mode using CAN-Bus, KWP2000 and ISO9141 protocols (Exceptions apply).



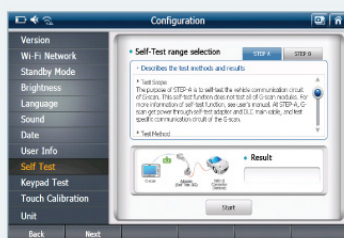
Full Text Description

High-resolution LCD screen and two-line DTC description display shows the long-text DTC descriptions in full, so you get all the information you need. No more acronyms and cutting of significant text.



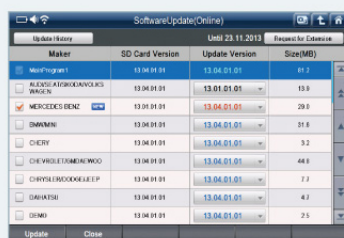
Smart Update System

Smart Update System provides greater flexibility for software management. The old and new software versions for each manufacturer can be downloaded directly from GIT's server, per user preference.



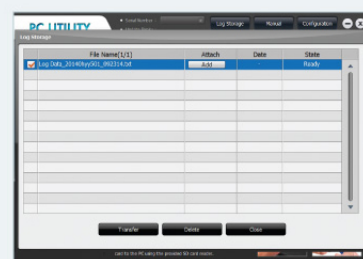
Self Test

When communication fails, G-scan 2 can identify whether it's a scan tool or connector problem. This eliminates the hassle of sending a unit back to the distributor for a simple wiring defect.



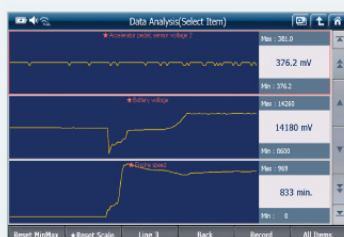
Smart Update

If access to Internet through a WiFi network is not available, G-scan 2 connects to the GIT server through the Internet, monitors the availability of updates and downloads directly to the base unit. This keeps the software up to date, even without WiFi.



Data Log and Feedback System

In cases of communication or function failure, users can log the bi-directional data transmission between G-scan 2 and the vehicle control systems. This log can be sent to GIT's engineers through the Log Transfer function of the PC Utility. The data log is then analyzed, feedback is provided, and when necessary, a patch file update is provided within 24 hours, during workdays.



Fast and Responsive Graphing with Auto Scale

Experience G-scan 2's amazingly responsive graph mode with auto scale function. It instantly self-adjusts maximum and minimum scale, enabling users to more accurately observe and compare live data.



G-scan2 Full Kit Diagnostic Adapters and Accessories

G-scan 2 VMI2

Optional Rear-Mount Module for Advanced Oscilloscope Module and Multimeter



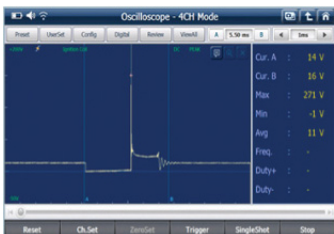
Oscilloscope



4 Channel Mode with Aux. Input



2 Channel Mode with Aux. Input



2/4 Channel Mode Single Pattern



Trigger Setting by Screen Touch

Digital Multi-Meter



Voltage Meter



Resistance Meter



Frequency Meter



Duty Cycle

Simulation Test

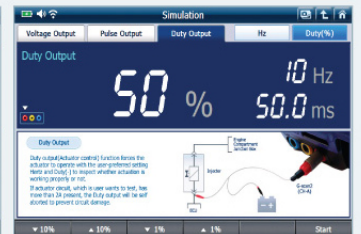
Simulation Test is an active diagnostic function where G-scan 2 sends out electric signals to the vehicle's sensor or actuator circuit, which enables in-depth diagnosis of input and output sides of the control system by closely observing the response.



Voltage Signal Output

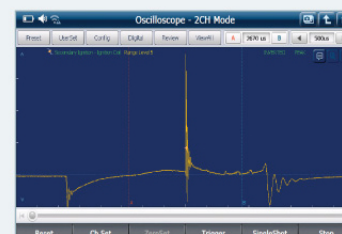
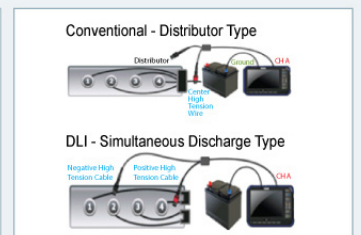


Frequency Signal Output

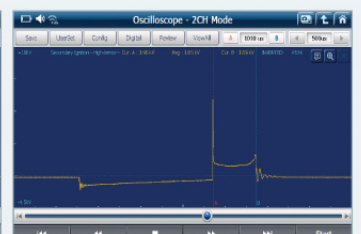


Duty Signal Output

Secondary Ignition



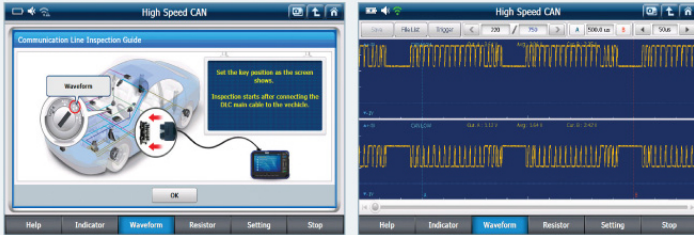
Coil-On Plug Ignition System



Conventional Ignition System

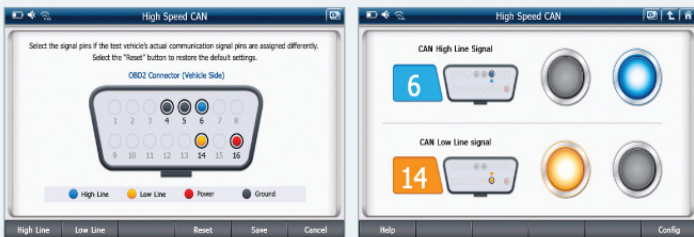
CAN Line Inspection

No probes needed! G-scan 2 is able to acquire communication line signals directly through the OBD2 adapter.



CAN Line Inspection Guide

Actual Waveform of High Speed CAN Signal



Customized Pin Configuration

CAN Line Inspection with Indicator

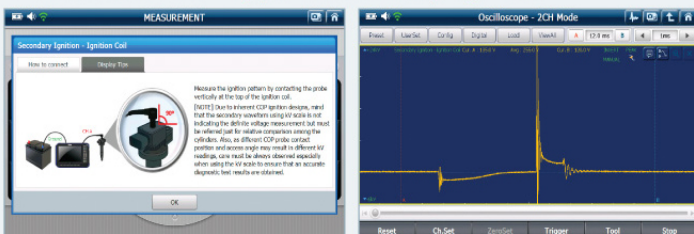
Channel Mathematics



Combine or Separate CH A and CH B

Horizontally Movable Screen with P-scroll

Enhanced COP Type Secondary Ignition



Measurement Guide

Coil-On Plug Ignition System

VMI2 Specification

Oscilloscope	Voltage Division	2 Channel Mode	±400 mV ~ ±400V
		4 Channel Mode	±4V ~ ±400V
	Vertical Resolution		12 bit
	Sampling Mode		Normal / Peak Mode
	Ground Position Moving		Supported
	AC/DC Coupling		Supported
Digital Multi-Meter	Time Division	2 Channel Mode	1 μs ~ 500 μs, 1 ms ~ 500 ms, 1 s, 2 s, 5 s
		4 Channel Mode	5 μs ~ 500 μs, 1 ms ~ 500 ms, 1 s, 2 s, 5 s
	AUX Input Voltage		0~5V
	Sampling Speed		Max 80 MS/s X 2CH
	Voltage		±0.5V / ±5V / ±50V / ±500V / Auto Range
	Resistance		1Ω ~ 10 MΩ / Auto Range
Simulation	Frequency		3 Hz ~ 100 kHz
	Duty Cycle		1.0% ~ 99.0% (3 Hz ~ 100 kHz)
	Pulse Width		500 ns ~ 990 ms
	Current / Vacuum		Supported
	Voltage Signal Output		0.0 ~ 5.0 V
	Frequency Signal Output		1Hz ~ 15kHz
	Actuator Control	Frequency Range	1Hz ~ 2kHz
		Duty Range	1% ~ 99% (1% or 10% per Step)
		Pulse Width	Depends on Frequency or Duty

VMI2 Basic Accessories



Probes and Basic Accessories

VMI2 Optional Accessories

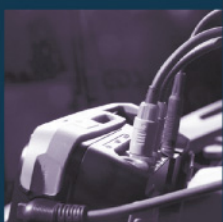


Secondary Ignition COP Probe for Coil-On Plug Ignition System

Secondary Ignition DLI Probe for Conventional Ignition System

BNC Male, BNC Female and 5mm Jacks

Current Clamps



Global Standard in Diagnostic Technology

